

MONTHLY MEMBERSHIP PROGRESS REPORT

LOCATION ARKANSAS

District 7 I

Results as of: 2/28/2021

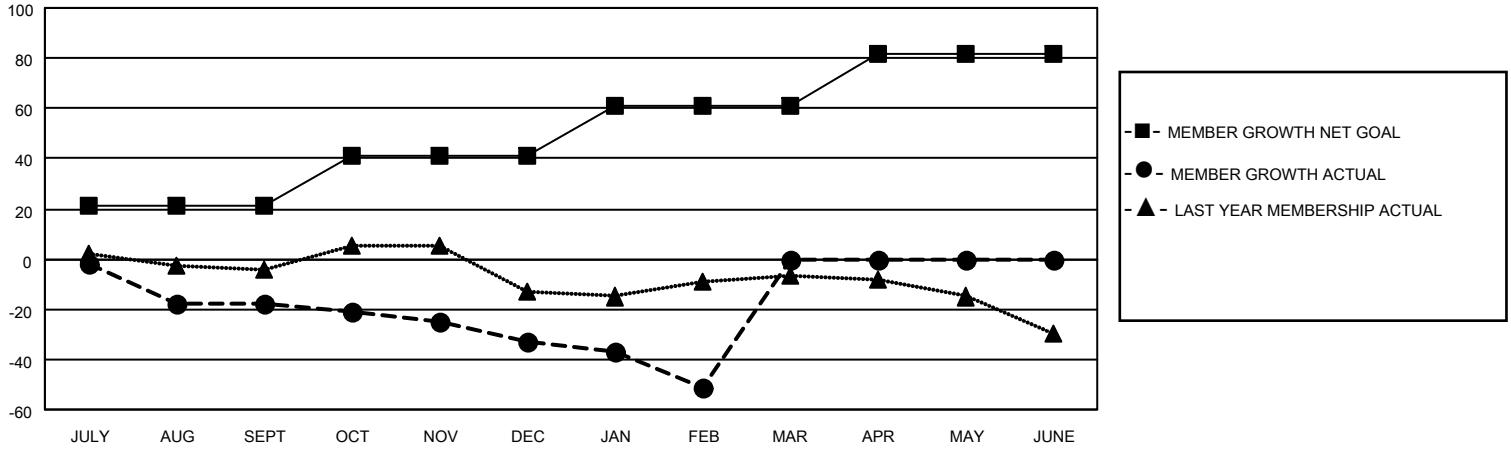
Clubs			
RESULTS FOR 2020-2021			
QUARTER	NEW CLUB GOAL	NEW CLUBS	DROPPED CLUBS
JULY/AUG/SEPT	0	0	0
OCT/NOV/DEC	0	0	0
JAN/FEB/MAR	0	0	0
APR/MAY/JUNE	1	0	0

Members			
RESULTS FOR 2020-2021			
QUARTER	MEMBER GROWTH NET GOAL	MEMBER GROWTH ACTUAL	DROPPED MEMBERS ACTUAL (including transfers)
JULY/AUG/SEPT	21	8	24
OCT/NOV/DEC	20	7	22
JAN/FEB/MAR	20	10	27
APR/MAY/JUNE	21	0	0

GOALS AND ACTUAL NEW CLUBS CUMULATIVE



GOALS AND ACTUAL MEMBERS CUMULATIVE



DROPPED CLUBS: 0	11 CLUBS OF 31 ADDED 1 OR MORE NEW MEMBERS	<u>GENDER DISTRIBUTION</u> MALE 440 (66.37%) FEMALE 223 (33.63%)
<u>DROPPED MEMBERS</u> DECEASED 10 CLUB CANCELLED 0 OTHER 63 <hr/> TOTAL 73	CLICK HERE FOR CUMULATIVE MEMBERSHIP DATA	TOTAL FAMILY UNIT MEMBERS 93 FAMILY MEMBERS PAYING HALF DUES 47